



# Starter Kit

User's Guide

## **Before use**

You need to charge the Battery.  
Please follow the steps on page 26.

## Ploom Exclusive Customer Service

**Hours: 10:00 AM-9:00 PM (excluding  
year-end and New Year's holidays)**

 **0120-108-513**

You can also make an inquiry via the  
Ploom website.

<https://www.ploom.jp/support/>



## Distributor

**Japan Tobacco Inc.**

4-1-1 Toranomom, Minato-ku, Tokyo 105-6927

# Table of Contents

|  |         |
|--|---------|
| Introduction .....                         | Page 4  |
| Disclaimer .....                           | Page 5  |
| Safety Information.....                    | Page 6  |
| Confirming the Contents of<br>the Kit..... | Page 22 |

|   |                |
|---|----------------|
| <b>Assembly .....</b>                           | <b>Page 24</b> |
| <b>Charging .....</b>                           | <b>Page 26</b> |
| <b>Use .....</b>                                | <b>Page 29</b> |
| <b>Replacing the Disposable<br/>Parts .....</b> | <b>Page 34</b> |
| <b>Cleaning.....</b>                            | <b>Page 38</b> |

|                           |         |
|---------------------------|---------|
| Troubleshooting .....     | Page 41 |
| Main Specifications ..... | Page 45 |

The content of this document may change without notice.  
The latest version of the User's Guide can be found on the Japan Tobacco website.



<https://www.ploom.jp/userguide/techplus/>

# Introduction

Thank you for purchasing a Ploom TECH+ Starter Kit (“Starter Kit”). Please read this document carefully to ensure safe use.

Japan Tobacco's Exclusive Low-Temperature Heating Method\*

40  
°C

LOW HEAT

\* During use, the temperature inside the tobacco capsule reaches about 40°C.

The liquid inside the cartridge is vaporized and passes through the tobacco capsule to produce tobacco vapor\*.



\*“Tobacco vapor” is Japan Tobacco’s term for vapor containing tobacco-leaf derivatives.

# Disclaimer

Japan Tobacco Inc. and stores selling this Starter Kit shall bear no liability or responsibility for direct or consequential damages resulting from improper use of this kit.

- Do not use this Starter Kit and Ploom TECH+ exclusive cartridge and tobacco capsules for other than the intended purpose.
- Minors (under 20 years) are prohibited from purchasing or using this Starter Kit.
- When you use the product in a public place, observe the rules set by your local authority and facilities and show good manners.
- If you transfer this Starter Kit to a third party, be sure also to hand over this kit together with the User's Guide (this document) and the warranty.
- About the warranty of products included with this Starter Kit, please read the warranty.
- The specifications and external appearance of the products included with this Starter Kit may be changed without prior notice.

# Safety Information

Please read the following precautions carefully so that you can use the products such as the Battery included with this Starter Kit and other accessories in a safe and secure manner.

---

## Meanings of warning indications

### Levels of hazards and damages



If you do not follow the instructions indicated with this sign, you will face an imminent danger that will result in death or serious injury from fires, electric shocks, overheating, explosion, and other hazards.



If you do not follow the instructions indicated with this sign, you will face a possible danger that can result in death or serious injury from fires, electric shocks, and other hazards.



If you do not follow the instructions indicated with this sign, you may face a hazardous situation that can result in a minor or moderate injury from electric shocks or other accidents, or damage to property or items in the surrounding area.

---

**Specific caution signs**



Explosion



Fire



Electric  
shock

**Prohibited action sign**



Prohibited  
action

**Mandatory action sign**



Mandatory  
action





Fire



Electric

shock



Explosion



Prohibited  
action

**Do not put the Battery and other accessories in a fire or subject it to heat.**

Do not put the Battery and other accessories in a fire or attempt to heat them with matches, lighter or burner. Doing so might cause overheating, fire hazard or explosion.



Prohibited  
action

**Do not use, charge, or store the Battery and other accessories in a place exposed to oily smoke, steam flow, humidity or dust.**

Doing so might cause a fire or give you an electric shock.



Prohibited  
action

**Do not use the Battery and other accessories near flammable substances.**

Do not use the Battery and other accessories near flammable substances (such as benzene, thinner, spray, hairstyling products). Doing so might cause a fire or explosion.



Prohibited  
action

**Do not use, charge, or store the Battery and other accessories in a place with high temperature.**

Do not use, charge, or store the Battery and other accessories near a fire, heat generating devices, or heaters, in a place exposed to direct sunlight and high temperatures (such as inside a car in summer). Doing so might cause overheating, fire hazard or explosion.



Prohibited  
action

**Do not touch the Battery and other accessories while the Battery is being charged during a thunderstorm.**

If you touch the AC Adaptor, the Micro USB Cable connected to the AC Adaptor, or the Battery during a thunderstorm, this might give you an electric shock.



Prohibited  
action

**Do not charge the Battery if the AC Adaptor or Micro USB Cable is damaged.**

Do not charge the Battery under the following conditions. Doing so might cause electric shocks, short circuit or fire hazard.

- The Micro USB Cable is damaged.
- The AC Adaptor plug is deformed.
- The Micro USB Cable connector is not fully inserted into the Micro USB Jack.



Mandatory  
action

**In the event of a malfunction or abnormal operation, immediately stop using or charging the product.**

If you continue to use or charge the product under such conditions, this might cause an unexpected accident or injury.



Prohibited  
action

**Do not perform maintenance of the product while the Battery is being charged or powered on.**

Before you start performing maintenance of the product, unplug the AC Adaptor from the electrical outlet and turn off the Battery. Failing to do so might cause a malfunction, electric shocks, or an unexpected accident.



Prohibited  
action

**Do not use, charge, or store the product near water sources.**

Do not use the product near a kitchen sink, bathtub or washbowl, or store it in a place with high humidity. Doing so might cause the product to fall into water or exposed to excessive humidity, which might result in malfunction of the Battery, fire or electric shock. If the product gets wet, stop using it immediately.



Prohibited  
action

**Do not touch the AC Adaptor, Battery or Micro USB Cable with wet hands.**

If you plug or unplug the AC Adaptor or touch the Battery or Micro USB Cable with wet hands, this might give you an electric shock.



Prohibited  
action

**Do not disassemble, modify or repair the Battery.**

Doing so might cause an unexpected accident or injury. If you experience any battery trouble, contact "Ploom Exclusive Customer Service" (back cover).



Prohibited  
action

**Do not leave the product if you observe any fluid leakage from the cartridge.**

Wipe the leaked fluid with a dry soft cloth (Page 38). If you get the fluid into your eyes, this might cause inflammation. In that case, do not rub your eyes and wash them immediately with running water. If the symptoms do not improve, seek medical attention.



Fire



Electric  
shock



Prohibited  
action

**Do not leave the Battery and other accessories within the reach of infants and children.**

If the infant or child has access to Battery and other accessories, this might cause an unexpected injury.



Prohibited  
action

**Do not store or dispose of any Ploom TECH+ items in an inappropriate manner.**

To prevent infants and children from accidentally ingesting or swallowing any Ploom TECH+ item, be sure to store them in a secure place and properly dispose of used cartridges and tobacco capsules. If infants or children accidentally ingest or swallow any Ploom TECH+ item, seek medical attention immediately.

When you dispose of the Battery or other accessories, be sure to follow the regulations of each local authority.



Prohibited  
action

**Do not cover or wrap the product while it is being used or charged.**

Doing so might cause a fire or burns.



Prohibited  
action

**Do not chew the cartridge or tobacco capsules.**

Doing so might cause you to accidentally ingest or swallow the capsule, or an unexpected injury.



Prohibited  
action

**Do not use non-exclusive products. Use only Ploom TECH+ cartridges and tobacco capsules.**

Only insert Ploom TECH+ exclusive cartridges to the Cartridge Cover and the Ploom TECH+ exclusive tobacco capsule to the Capsule Holder. Failing to do so might cause an electric shock, malfunction or unexpected accident.



Prohibited  
action

**Do not use the product in an inappropriate manner other than the method described in this User's Guide.**

Doing so might cause an unexpected injury or malfunction.



Mandatory  
action

**Periodically clean the AC Adaptor plug.**

If dust or other contaminants accumulate in the plug of the AC Adaptor, this might cause a fire. After unplugging the AC Adaptor from the electrical outlet, periodically clean the plug with a dry cloth.



Mandatory  
action

**Tighten each part firmly.**

If any part of Ploom TECH+ becomes detached during use, you might accidentally ingest or swallow the part, or it could cause an unexpected injury. First, make sure that the connecting portions between the Battery and Cartridge Cover and the Cartridge Cover and Capsule Holder are firmly tightened. Then, set the tobacco capsule in the Capsule Holder. When you connect each part, make sure there is no dust, foreign substance, or moisture on the part.



Mandatory  
action

**Ensure that individuals who need support do not use this product alone without the monitoring or direction of a person who is responsible for safety. Also, ensure that children do not use this product.**

Otherwise, there is a risk of burns, electric shock, or injury.



## CAUTION



Prohibited  
action

**Do not charge the Battery using products other than the dedicated AC Adaptor and Micro USB Cable.**

Doing so might cause an unexpected injury or malfunction.



Prohibited  
action

**Do not use detergents, solvents, chemicals, volatile substances, compressed air, etc. for maintenance.**

Doing so might cause damages such as tarnishing or discoloration of the surface, coating peel-off or unexpected malfunction.



Prohibited  
action

**Do not inhale or breathe into the tobacco capsule with excessive force.**

Doing so might cause an unexpected injury, burns, or malfunction.



Prohibited  
action

**Do not touch the AC Adaptor and the portion near the connection between the Cartridge Cover and Battery for an extended period while the Battery is being charged.**

Doing so might cause low-temperature burns.





Prohibited  
action

**Do not subject the Battery to a strong impact.**

If the Battery is dropped or hit against some object and subjected to impact, this might damage it and cause an unexpected injury or malfunction.



Prohibited  
action

**Do not use the cartridge and tobacco capsules in an inappropriate manner.**

The cartridge and tobacco capsules are exclusively for use with Ploom TECH+ and designed to be used only once. You cannot reuse them. Do not perform the following actions.

- Refilling the fluid in the cartridge to reuse it.
- Filling the tobacco capsule with leaf tobacco to reuse it.



Mandatory  
action

**When you charge the Battery, make sure there are no foreign substances on the terminal portions and connection portions.**

If there is dust, foreign substances, or moisture on the Micro USB Jack of the Battery, connection portion of the AC Adaptor or connection portion between the Cartridge Cover and Battery, this might cause a short circuit or malfunction.



Mandatory  
action

**Charge the Battery using only the dedicated AC Adaptor.**

The AC Adaptor operates on AC 100 V to 240 V. Be sure to use the AC Adaptor in Japan only. You can use the AC Adaptor with an electrical outlet.



Mandatory  
action

**To charge the Battery, connect the parts in the correct order.**

Failing to do so might cause an unexpected accident or malfunction. (For the correct order to connect the parts, see Page 26.)



Mandatory  
action

**To charge the Battery, make sure that the connectors and plugs are firmly connected.**

If the Micro USB Cable or AC Adaptor is not firmly connected, this might cause charging failure, or result in a fire, electric shock or malfunction.



Mandatory  
action

**When you unplug the AC Adaptor from the electrical outlet, hold the adaptor firmly.**

If you unplug the AC Adaptor by holding the Micro USB Cable, this might cause cable line breakage or unexpected malfunction of the AC Adaptor. Be sure to hold the AC Adaptor when you unplug it from the electrical outlet.



Mandatory  
action

**When you unplug the Micro USB Cable, hold the connector firmly.**

When you unplug the Micro USB Cable, be sure to hold the connector firmly. If you unplug the Micro USB Cable by holding the Battery or cable portion, this might cause a malfunction such as line breakage of the cable.



Mandatory  
action

**After the Battery is fully charged, disconnect the AC Adaptor and Micro USB Cable.**

If you leave the adaptor or Micro USB Cable in the connected state, this might cause a malfunction.



Mandatory  
action

**Make sure not to block the Intake Hole, during use.**

If you use the product with the Intake Hole blocked, this will prevent air flow and might cause electric current to flow accidentally due to an internal sensor malfunction and cause an unexpected injury or malfunction.



Mandatory  
action

**Make sure to prevent the product from being exposed to sand and dust in places such as the beach, sandy soil, or a place exposed to clouds of dust.**

If sand or dust gets into the Battery, this might cause a malfunction.

## Precautions on the lithium-ion battery

The Ploom TECH+ Battery contains a built-in lithium-ion battery. To avoid battery fluid leakage or explosion and serious injury caused by overheating or a fire hazard, be sure to observe the following precautions so that you use the product in a safe and secure manner.



Prohibited  
action

**If the battery fluid leaks, do not touch the Battery with bare hands.**

- If you get the fluid into your eyes, this might cause loss of vision. Do not rub your eyes and wash them immediately with running water. After that, immediately seek medical attention.
- If the fluid adheres to clothes or skin, this might cause burns or inflammation. If you experience symptoms such as burns or inflammation after rinsing with water, seek medical attention.



Explosion Fire



Mandatory  
action

**If you notice any battery fluid leakage or abnormal smell, immediately remove the product away from a fire source.**

If you continue to use the product near a fire source, this might result in ignition of the leaked battery fluid, causing a risk of explosion or fire.



Prohibited  
action

**Do not charge, use, leave or store the product in extremely high temperatures or low temperatures.**

Doing so might accelerate degradation of the built-in battery. Also, do not store the product in high-temperature and high-humidity environments.



Prohibited  
action

**Do not burn the Battery or other accessories.**

It is highly dangerous to burn the Battery or other accessories since they are made of materials such as metal, silicon, and plastic.

## Precautions on disposal of products no longer used



The Ploom TECH+ Battery contains a built-in lithium-ion battery. The Battery, Capsule Holder, Cartridge Cover, AC Adaptor, and Micro USB Cable are made of materials such as metal and plastic. When you dispose of them, be sure to follow the regulations of each local authority.

# Confirming the Contents of the Kit

Before use, please ensure that the contents of your kit match those listed below. If anything is missing, please contact “Ploom Exclusive Customer Service” (back cover).

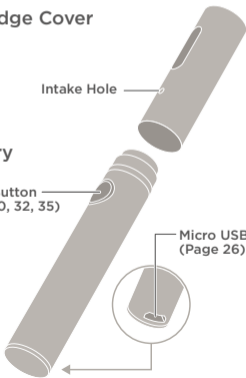
## Cartridge Cover

Intake Hole

## Battery

Power Button  
(Page 30, 32, 35)

Micro USB Jack  
(Page 26)



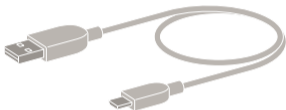
## AC Adaptor



## Capsule Holder



## Micro USB Cable



## User's Guide (this document)



## Warranty



Other documents may be included such as a leaflet about Ploom TECH+.

## Note on separately sold cartridges and tobacco capsules

---

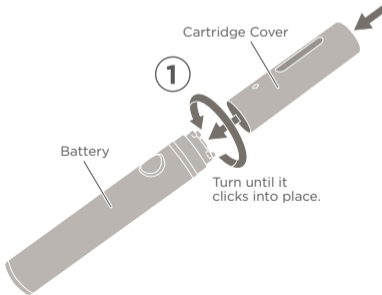
Exclusive separately sold Ploom TECH+ cartridges and tobacco capsules are required. Please use only specialized products. Other products including tobacco products exclusively for Ploom TECH cannot be used.

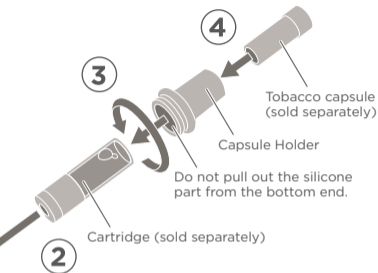


# Assembly

Prepare a separately sold cartridge and tobacco capsule, and assemble the product in the order shown by the numbers in the figure.

## Completed Assembly



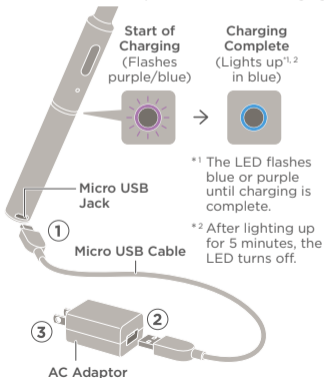


- Insert the cartridge into the Cartridge Cover with the metal part first.
- Tobacco vapor will not come through if the silicone part is removed from the Capsule Holder.
- If liquid from the cartridge gets onto any of the parts, make sure that the power is turned off and then wipe off the liquid with a dry cloth (Page 38).
- Assemble the parts securely so that none of them come off. Firmly insert the tobacco capsule all the way to the bottom.

# Charging

Charging is necessary when you use the product for the first time after purchase. Power will not turn on until the battery is charged.

- Connect the parts in the order shown by the numbers in the figure.
- You cannot use the product while it is charging.



## How to check the remaining battery level

---

### During Charging

The color of the LED indicates the status of charging.

Once the Battery is fully charged, the LED will stay lit and then turn off after 5 minutes.



Approx. 1% - 20%  
(Flashes purple)



Approx. 21% - 99%  
(Flashes blue)



100%  
(Lights up in blue)

### During Use

The color of the LED when you press the Power Button indicates the remaining battery level. If the LED lights up in red, the Battery is depleted. Please charge the Battery "Charging" (Page 26).



Approx. 21% - 100%  
(Lights up in blue)



Approx. 1% - 20%  
(Lights up in purple)



0%  
(Lights up in red)

- Fully charging the Battery from a completely depleted state takes about 90 minutes (when using the dedicated AC Adaptor and Micro USB Cable). However, charging may take longer depending on the temperature environment.
- You can use five tobacco capsules (one cartridge) on a full charge. However, this number may increase or decrease depending on the deterioration of the Battery, ambient temperature, etc.

# Use

You can use five tobacco capsules (one cartridge) on a full charge. One tobacco capsule provides enough flavor and aroma for about 50 puffs\*.

\* One inhalation is counted as one puff. The number of puffs may vary depending on how deeply you inhale.

Tobacco capsule

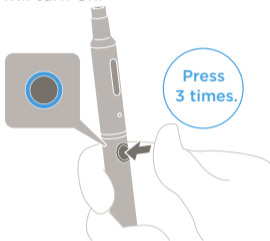
Each cartridge contains enough liquid for five tobacco capsules.



- For information on when you need to replace the tobacco capsule and cartridge, refer to “Replacing the Disposable Parts” (Page 34).

# 1 Press the Power Button 3 times in sequence.

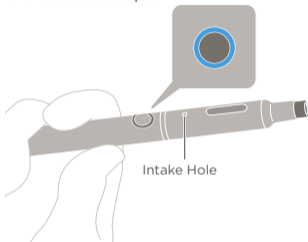
The LED will light up in blue or purple for 1 second, and the power will turn on.



- If you press slowly, the power will not turn on. Press three times within 2 seconds.
- Do not hold down the Power Button. If you hold it down for 3 seconds or longer, the power will turn off.
- If the remaining battery level is around 21 - 100%, the LED will light up in blue for 1 second. If it is around 1 - 20%, the LED will light up in purple for 1 second.
- If the Battery is depleted, when you press the Power Button three times, the LED for light up in red for 1 second.

## 2 Inhale the tobacco vapor.

As you inhale, the LED will light up in blue or purple and you can enjoy the tobacco vapor.



- Avoid covering the Intake Hole with your hand or fingers. If the airflow is blocked, the internal sensor may malfunction and cause unintended conduction of electricity, injury, or damage.
- You may hear a crackling sound during use. This sound is produced when liquid is vaporized inside the cartridge, and does not indicate any issue with the safety of the product.
- If the Battery is depleted, the LED will light up in red and no tobacco vapor will come out.

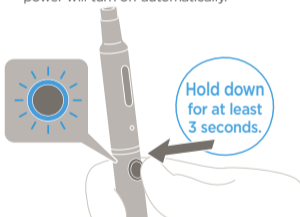


### 3 When you are done, hold down the Power Button for at least 3 seconds to turn off the power.

The LED will flash blue or purple 3 times \*<sup>1</sup>, and the power will turn off \*<sup>2</sup>.

\*<sup>1</sup> If the Battery is depleted, the LED will flash red 3 times.

\*<sup>2</sup> If there is no operation for 6 minutes, the power will turn off automatically.



- You can take a break and resume using the product later, as long as there is still enough battery power remaining. However, if you wait too long, the flavor may be impacted.
- To properly enjoy the flavor and aroma of the tobacco vapor, use tobacco capsules and cartridges soon after purchase.

### **Disposing of used tobacco capsules and cartridges**

---

Dispose of used tobacco capsules and cartridges in accordance with the instructions of local authorities. Maintain proper disposal to keep used capsules and cartridges out of sight of infants and children.

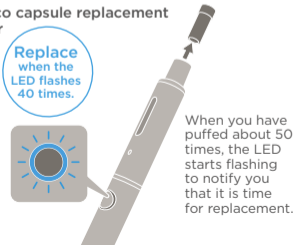
# Replacing the Disposable Parts

Tobacco capsules and cartridges are disposable. Replace them properly according to the instructions in this guide. If you do not replace the tobacco capsules and cartridges correctly, you may end up with extra tobacco capsules.

## Replacing the Tobacco Capsule

It is time to replace the tobacco capsule when the LED flashes blue or purple 40 times in sequence. Replace the tobacco capsule with a new one according to the following procedure.

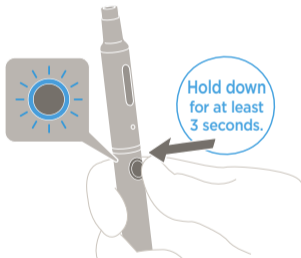
**Tobacco capsule replacement notifier**



# 1 Hold the Power Button down for at least 3 seconds while the LED is flashing.

This will stop the flashing\* and deactivate the capsule replacement notification function.

\* If the flashing pattern ends before you can deactivate the function, inhale one more time. The LED will start flashing again.



- The capsule replacement notification function can only be deactivated while the LED is flashing.
- Be sure to deactivate the function before using the product again. Otherwise, no tobacco vapor will come out and you will be unable to use the product.

## 2 Replace the tobacco capsule.

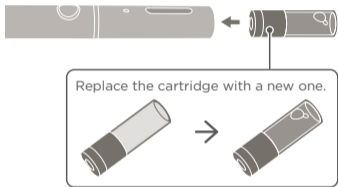
Once you have finished replacing the capsule, you can enjoy tobacco vapor again.



- When you deactivate the capsule replacement notification function and replace the tobacco capsule with a new one, the puff count is reset to 1.
- When you replace the tobacco capsule with a new one, make sure that no liquid gets onto any of the parts. If necessary, wipe off the liquid with a dry cloth or perform cleaning (Page 38).

## Replacing the Cartridge

Each cartridge contains enough liquid for five tobacco capsules. After you have used five tobacco capsules, please replace the cartridge with a new one.



- After replacing the cartridge, if you find that the Capsule Holder is difficult to attach to the Cartridge Cover, make sure that the silicone part of the Capsule Holder is not wet. If necessary, wipe it off with a soft, dry cloth.
- When you replace the cartridge with a new one, make sure that no liquid gets onto any of the parts. If necessary, wipe off the liquid with a dry cloth or perform cleaning (Page 38).

# Cleaning

## Cleaning the Capsule Holder



If the Capsule Holder gets dirty or develops an odor, this may affect the flavor and aroma, and you may not be able to enjoy them properly. For this reason, be sure to clean it regularly. The Capsule Holder can be rinsed with cold or lukewarm water.



## Cleaning the Battery and Cartridge Cover



The Battery and Cartridge Cover may get dirty. Wipe off any dirt with a soft, dry cloth.



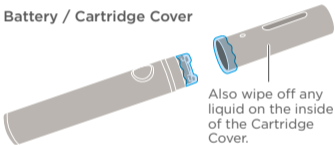
- Never clean any of the parts using boiling water, detergent, a dishwasher, etc.
- Make sure that the silicone part of the Capsule Holder does not come off.
- After you rinse the Capsule Holder, wipe off any moisture and let it dry thoroughly. If you use the Capsule Holder without drying it well, this may cause a malfunction.

## Cleaning Up Leaked Liquid

The liquid inside the cartridge may leak and get onto the other parts. For this reason, be sure to perform cleaning regularly.

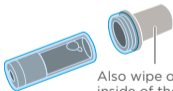
- The colored areas in the diagrams below show where leaked liquid tends to adhere.
- Wipe off any spilled liquid with a soft, dry cloth.

### Battery / Cartridge Cover



Also wipe off any liquid on the inside of the Cartridge Cover.

### Cartridge / Capsule Holder



Also wipe off any liquid on the inside of the Capsule Holder. If there is liquid on the inside of the Capsule Holder, it may be difficult to attach the Capsule Holder to the Cartridge Cover after you insert the cartridge.



### **Note on leakage of liquid from the cartridge**

---

- Liquid may leak from the cartridge due to sudden changes in temperature (such as when you bring the cartridge from a below-freezing outdoor environment to a warm indoor environment in winter), or changes in pressure (such as when you bring the cartridge on an airplane). If liquid leaks out, perform cleaning. In addition, if you will be bringing the cartridge on an airplane or leaving it unused for a long period of time, take preventive measures to keep the liquid from getting onto the other parts by removing the cartridge from the Cartridge Cover in advance and sealing it up separately.
- Immediately wipe up any liquid that leaks from the cartridge. If it gets in your eyes, they may become irritated. Avoid rubbing your eyes, and rinse them with clean water immediately. If your symptoms do not improve, seek medical attention.

# Troubleshooting

If the product is not working properly or acting strangely, check the following items.

## **The LED is repeatedly flashing blue and red.**

Check the warranty, and then contact “Ploom Exclusive Customer Service” (back cover).



## **The LED lights up in red during use.**

The Battery is depleted. Please charge the Battery. If charging the Battery does not resolve the issue, please contact “Ploom Exclusive Customer Service” (back cover).



## **The LED lights up in blue or purple, but no tobacco vapor comes out.**

The cartridge may be out of liquid. Please replace the cartridge with a new one (Page 37). If replacing the cartridge does not resolve the issue, please contact “Ploom Exclusive Customer Service” (back cover).



## **The Battery is too hot to hold.**

The Battery may be malfunctioning. Discontinue use of the product and contact “Ploom Exclusive Customer Service” (back cover).

The Battery may become somewhat hot after continuous use due to extended heat generation. However, this is not a malfunction.

## **The LED is flashing red.**

The Battery has reached the end of its product life. Please purchase a new Battery. Once the LED starts flashing red, the Battery is no longer usable.



## **The LED does not flash and charging does not start.**

- Make sure that the Micro USB Cable, Battery, and AC Adaptor are securely connected to each other.
- Make sure that the AC Adaptor is firmly inserted into the electrical outlet.
- Check for dirt on the Micro USB Jack of the Battery or the USB jack of the AC Adaptor. If they are dirty, wipe them off with a soft, dry cloth.

After checking the items above, try charging again according to the procedure on Page 26. If none of the steps above resolves the issue, there may be a problem with the Battery, Micro USB Cable, or AC Adaptor. Discontinue use of the product and contact “Ploom Exclusive Customer Service” (back cover).

## **The product will not turn on after it was left unused for a long period of time.**

When you leave the product unused for long periods of time, the voltage decreases due to self-discharge. Charge the Battery before using it again.

## The power turns off suddenly during use.

The power may turn off if you continuously inhale many times in succession. Inhale slowly and take long puffs. If this does not resolve the issue, please contact “Ploom Exclusive Customer Service” (back cover).

## The Capsule Holder does not fit.

- The cartridge may not have been inserted properly. Try reinserting it.
- Liquid makes the contact surfaces slippery, and may prevent proper attachment. If there is liquid on the silicone part of the Capsule Holder or on the cartridge side, wipe it off with a soft and dry cloth. When both surfaces are dry, reinsert the cartridge.



Wipe off any liquid on the silicone part of the Capsule Holder.



Wipe off liquid from the cartridge.

- When you attach the Capsule Holder to the Cartridge Cover, hold down the cartridge with the silicone part of the Capsule Holder, and turn the Capsule Holder itself.



# Main Specifications

## Battery

Battery Type

Built-in lithium-ion battery

Battery Capacity

460 mAh

Charging Time

Approx. 90 minutes

Input Terminal

USB jack (Micro B)

Dimensions

Approx. 140.9 mm × 15.0 mm (H / Dia.)

Weight

Approx. 40 g

Operational Temperature Range

5 °C — 35 °C (during charging)

-5 °C — 40 °C (during use)

## AC Adaptor

Model Name

WA-SJPT12-JA

Rated Input

AC 100 V — 240 V, 50/60 Hz, 0.2 A

Rated Output

DC 5 V, 1.5 A

Dimensions

Approx. 31.6 mm × 59.5 mm × 23.0 mm  
(W / H / D)

Weight

Approx. 32 g

## Micro USB Cable

Dimensions

Approx. 60 cm

Weight

Approx. 15.3 g

For information on other Ploom products,  
refer to the following website.



<https://www.ploom.jp/>

